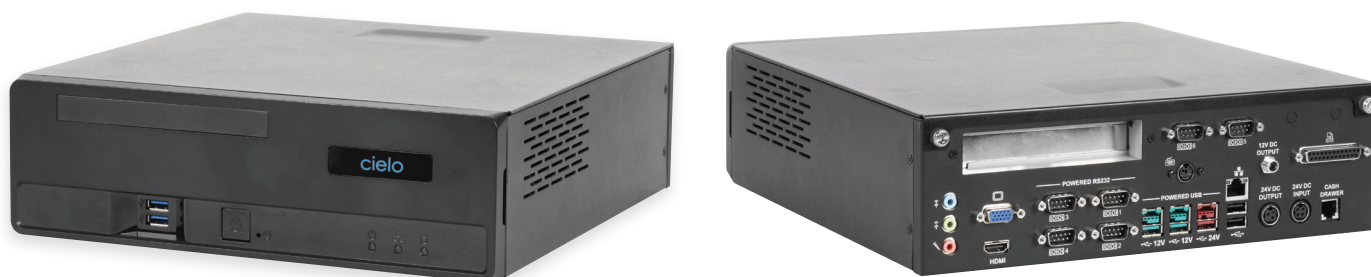


Cielo BX-500

Elegantly simple, powerful, reliable.



The Cielo BX-500 combines elegant simplicity with performance to deliver a powerful, flexible and affordable modular POS system.

Supporting Intel 4th generation high performance and low energy processors, the Cielo BX-500 is highly efficient and fast enough to keep up with demanding POS and back office applications. The BX-500's durable construction and single board design maximises reliability and ensures it is easy to service and upgrade when required, minimising the impact of any unexpected downtime and maximising return on investment.

The Cielo BX-500 has extensive retail specific connectivity via a range of ports; powered serial, powered USB, Ethernet, parallel and cash drawer kick. Connectivity can also be increased with add-on I/O cards.

With a future proofed architecture, the BX-500 can be further enhanced with option such as RAID, optical drive and graphics cards.

Features

- Powerful, modular and durable design and construction
- Supports Intel's 4th generation CPUs; Celeron G1820, Core i3-4330, Core i5-4590S, Core i7-4790S
- Wide range of power connectivity for POS peripherals
- Upgrade options; RAID, optical drive, graphics card and I/O cards
- Compatible with Windows and Linux
- Easy to upgrade and service



Cielo BX-500 Specifications	
CPU	4th Gen Intel Desktop CPU, Celeron G1820 2.7GHz/Core i3-4330 3.5GHz/ Core i5-4590S 3.0GHz/Core i7-4790S 3.2GHz
Memory & RAM	240-Pin DDR3L RAM * 2 slots, supports up to 16GB
Graphic Memory	Intel DVMT technology supports up to 256MB of video memory sharing
RAID function	Onboard RAID 0/1 (Q87 only)
Remote Management	Intel AMT 9.0 (Q87 only)
Storage	2*2.5" SATA HDD/SSD slots
Optical Device	1*slim type SATA DVD R/W
Expansion Slot	1* Mini PCIe slot (optional)
Passmark Performance Test (v8.0) (i5-4590S)	
CPU Mark	7013
2D Graphics	684
3D Graphics	632
Memory	1945
Disk	2960
Overall Passmark	2576
Power Supply	External DC 24v / 200w Power Adapter. AC 90 to 264 V Full Range
Power Button	1 x Power Trigger
System Dimensions	293 x 309 x 92 mm (L x W x D)
Product Certification	CE/FCC/LVD Certificated
Temperature	Operating temperature: 0 °C to 40 °C Storage temperature: -25 °C to 70 °C
Software Compatibility	Windows 7/POSReady 7/ Windows 8.1 / Windows 10 / Linux Kernel 3.0 or above
I/O Connectivity (Standard)	
Parallel Port	1 x LPT port (SPP/EPP/ECP)
Serial Port	6 x DB-9 COM port COM1/2/3/4 with DC5V/12V / 24V output on Pin 9 selectable
USB Port	2*USB2.0 port (rear I/O) / 2*USB3.0 port (front I/O)
Powered USB Port	2*12V Powered USB port / 1*24V Powered USB port
PS/2 Port	1*PS/2 Keyboard port
LAN Port	1 x (10/100/1000M bps auto)
Audio Port	1 x Line in, 1 x Line out, 1 x MIC in
Graphics Port	1*DB-15 VGA port, 1*HDMI port, 1*DP port (optional)
Cash Drawer Port	1*RJ12 cash drawer port (12V/24V selectable, GPIO) Supports dual cash drawers, Supports OPOS driver
DC Jack	1*12V DC output / 1*24V DC output



Box Technologies Head Office
20 Thame Park Business Centre
Wenman Road
Thame, OX9 3XA
United Kingdom
T: +44 (0) 1844 264 000
E: sales@boxtechnologies.com

Box Technologies Sweden
Upplagsvägen 1, 4 tr
117 43 Stockholm
Sweden
T: +46 (0) 8 120 80 320
E: sales@boxtechnologies.se

Box Technologies Norway
Torgbygget
Nydalsveien 33
0484 Oslo
T: +47 22 18 26 35
E: sales@boxtechnologies.se