

Cielo PX-515 15"

All-in-One Panel PC



World's First Modular All-in-one Point of Sale: Ultimate choice, performance and upgradability

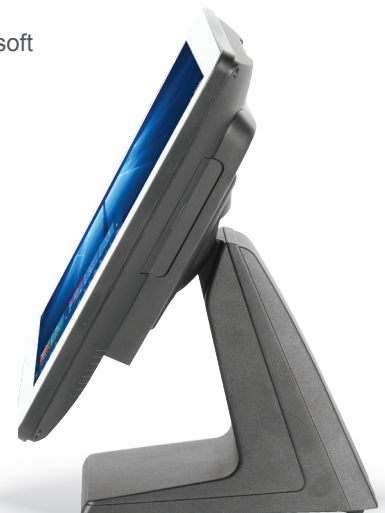
Designed to elegantly complement any retail space, the Cielo PX-515 benefits from a powerful Intel i5 core – Intel's 4th generation processor – which is renowned for its low energy consumption. It delivers optimum performance to support the world's leading retail PoS applications.

The modular design of the Cielo PX-515 makes it easy to upgrade as the processor unit and touch-screen can be changed independently. All components have been carefully selected to deliver outstanding performance, build quality and reliability. To maximise up-time, service and maintenance have not been compromised – with hard disk and accessory options that can be easily and quickly replaced, with minimal tools required.

The new PX-515 offers ultimate choice for smart retailers.

Features

- Elegant, versatile, small footprint design
- Flexible, modular design with easy to replace screen, processor unit and HDD
- High performance Intel Core i5-4590 3.3GHz dual core CPU
- Bezel free 15" or 21.5" P-CAP multi-touch screen options
- Rich retail specific I/O and wide range of peripherals
- VESA 100 support for flexible counter, wall or pole mounting options
- Aluminium construction to optimise thermal management and durability
- Compatible with Microsoft

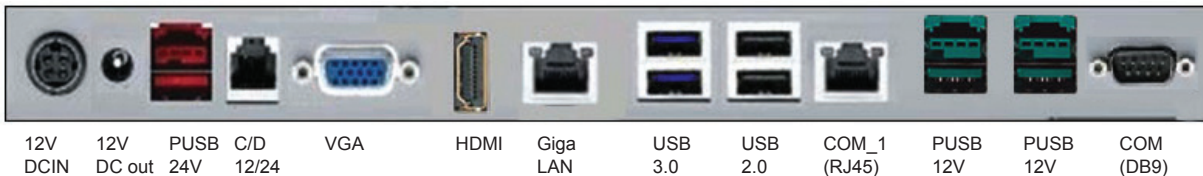


Cielo PX-515 15" Panel PC All-in-One Terminal

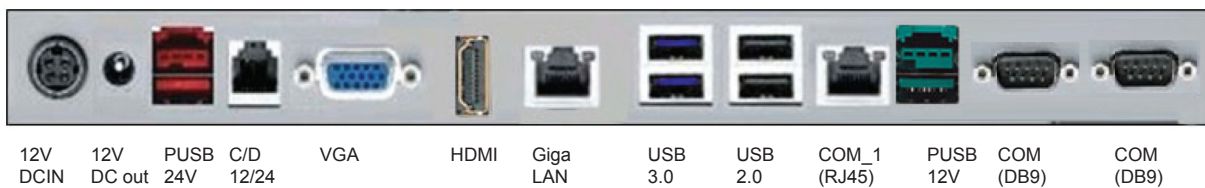
Cielo PX-515 Specifications

Platform Processor	Intel Core i5-4590 3.3GHz (Turbo 3.7GHz) Quad core CPU
Case Colour	Black
Memory	4GB (8GB or 16GB optional)
Display Size	15" TFT-LED / 1024 X 768 (21.5" optional)
HDD	120GB SSD (1 X 2.5" SATA HDD or SSD) Optional M.2 Storage Device
Brightness	350 cd/m2 (LED)
Touch Screen	10-point PCAP Touch
Stand	Aluminium stand
Speaker	2 x 2 Watt Speaker
Serial Port	1 x External: COM1 (RJ45) with RI / 5V / 12V Selectable
USB Port	4 x USB Ports (USB 2.0 x 2, USB 3.0 x 2)
Powered USB Port	1 x 24V
Cash Drawer Port	1 x RJ11 (12V / 24V)
LAN Port	1 x RJ45 Gigabit LAN
Video Port	1 x VGA, 1 x HDMI
DC Power	1 x input 12V DC / 1 x Output 12V DC Jack 2.5mm
WiFi	Optional 802.11 b/g/n
Optional "Type C" I/O	Serial Port: 2 x COM A & COM B (RJ45 RI / 5V / 12V selectable), 1 x Powered USB port (12V), 1 x mic-in
Optional "Type K" I/O	2 x 12V Powered USB, 1 x DB9
Optional "Type G" I/O	Powered USB Port: 3 x 12V
Operating System	Compatible with Microsoft

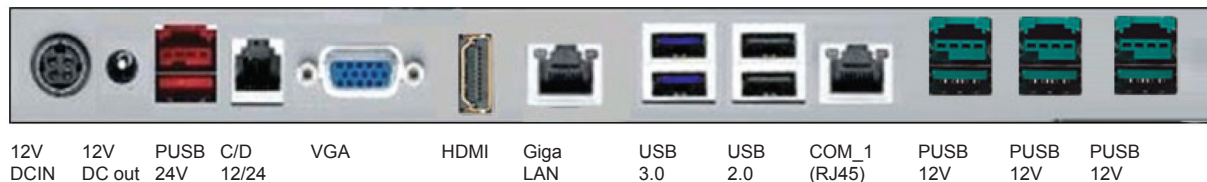
Type K Connectivity Option



Type C Connectivity Option



Type G Connectivity Option



Box Technologies Head Office
 20 Thame Park Business Centre
 Wenman Road
 Thame, OX9 3XA
 United Kingdom
 T: +44 (0) 1844 264 099
 E: sales@boxtechnologies.com

Box Technologies Sweden
 Upplagsvägen 1, 4 tr
 117 43 Stockholm
 Sweden
 T: +46 (0) 8 120 80 320
 E: sales@boxtechnologies.se

Box Technologies Norway
 Torgbygget
 Nydalsveien 33
 0484 Oslo
 T: +47 22 18 26 35
 E: sales@boxtechnologies.se